

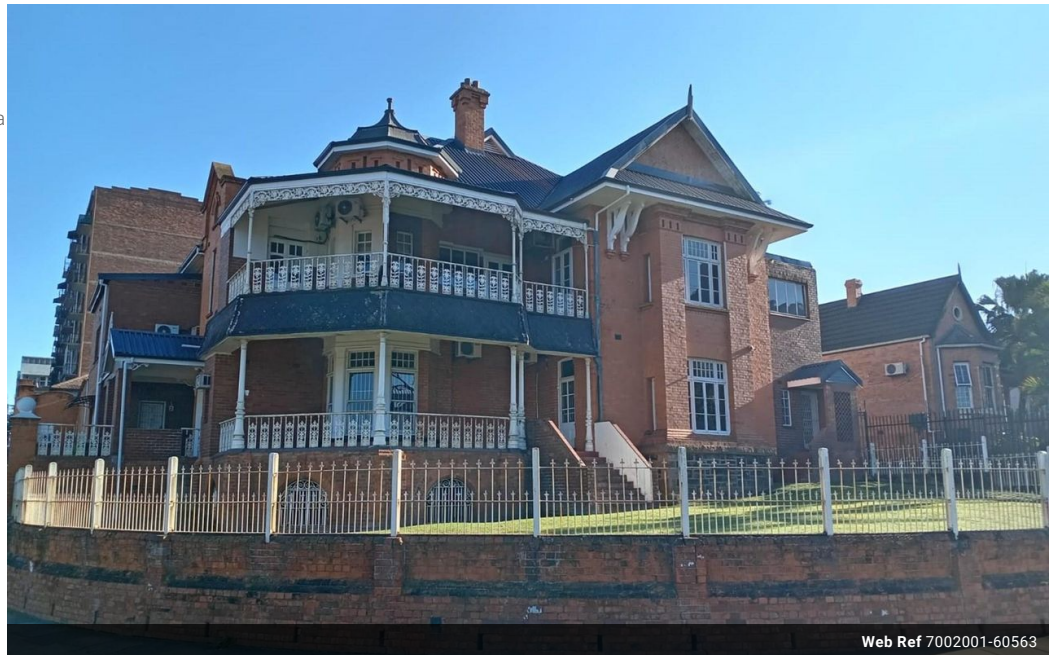


Mdu Hlongwane  
071-136-5736  
mdu.hlongwane@expsouthafrica.co.za

Contact eXp Realty

087 8212575

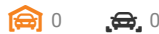
South Africa



Web Ref 7002001-60563



R4,200,000



## Commercial Offices in Central CBD In PMB For Sale

Prime Double Storey Commercial Office Space Available!

Are you a lawyer, surgeon, pharmacist, or business owner looking for the perfect office space? Look no further! Located in the heart of the city, this stunning double-Storey commercial property is ideal for your professional needs.

### \*\*Property Highlights:\*\*

- \*\*Office Space\*\*: 14 Spacious offices designed for productivity and comfort.
- \*\*Bathrooms\*\*: 4 Clean and modern facilities.
- \*\*Boardrooms\*\*: 2 Professional boardrooms for meetings and presentations.
- \*\*Kitchen\*\*: 2 Fully equipped kitchen for your convenience.
- \*\*Toilets\*\*: 4 Well-maintained restrooms.
- \*\*Parking\*\*: 18 Ample parking space for clients and staff.
- \*\*Security\*\*: Fully fenced with an alarm system, burglar guards, and intercom access. Remote gate access ensures added security.

## Features

**Zoning** Commercial

### Exterior

Security Yes

### Sizes

Land Size 1,501m<sup>2</sup>  
Building Height 100m

### Extras

Closed Circuit TV Covered Parking Near Shops On Quiet Road Common Areas Near University/ Campus Air Conditioning Unit Fire Escape Brick Near Congress-Centre Near Schools Eat-in Kitchen Protected (Historical) Near Hospital Frequency location Near Golf Course Corner Lot Near Airport Security - System Veranda Kitchen-Dinette City Center Near Shopping Mall Fibre Near Bus CATV-cable Satellite Concrete Open fire South Kitchen - Extra Glass Siding On Busy Road Entrance Hall Near Park High Speed Internet Alarm System Modern Near Public Transportation Near Medical Center High Traffic Pets Not Allowed Wheelchair Accessible En-suite Bathroom First owner Hob Balcony Safe Location Open Old Building Near Fitness centre