



Conrad Maritz
064-934-3259
conrad.maritz@expsouthafrica.co.za

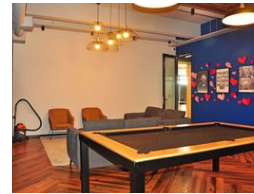
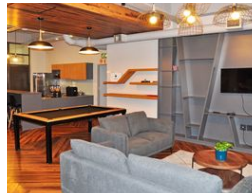
Contact eXp Realty

087 8212575

South Africa



Web Ref 7002001-86145



R57,240 pm

Gross Monthly Rental R57,240 Excl. VAT

 0  0

An Office Space That Redefines First Impressions

Step into a world where professional elegance meets modern functionality. This exceptional ground floor office in Maitland's sought-after M5 Park is not just a workspace—it's a statement. From the moment you enter through the sleek glass front door, you're greeted by a welcoming reception area that sets the tone for the sophistication that follows. Inside, a sense of spacious calm flows effortlessly through the design. A contemporary kitchen—with ample cupboard space, a sink, and a relaxing lounge area—offers the perfect spot for casual meetings or coffee breaks that spark big ideas. Need to impress clients or host team strategy sessions? The large boardroom is ready to shine, offering a stylish, private space to brainstorm, present, or seal the deal.

Features

Zoning Commercial

Sizes
Floor Size 424m²

Extras
Good reachable traffic Near Public Transportation On Quiet Road Concrete Near Shopping Mall
Safe Location Open High Traffic City Center Pets Not Allowed Near Hospital Near Medical
Center On Busy Road Near Airport Near Bus