


**Meshaan Naidoo**

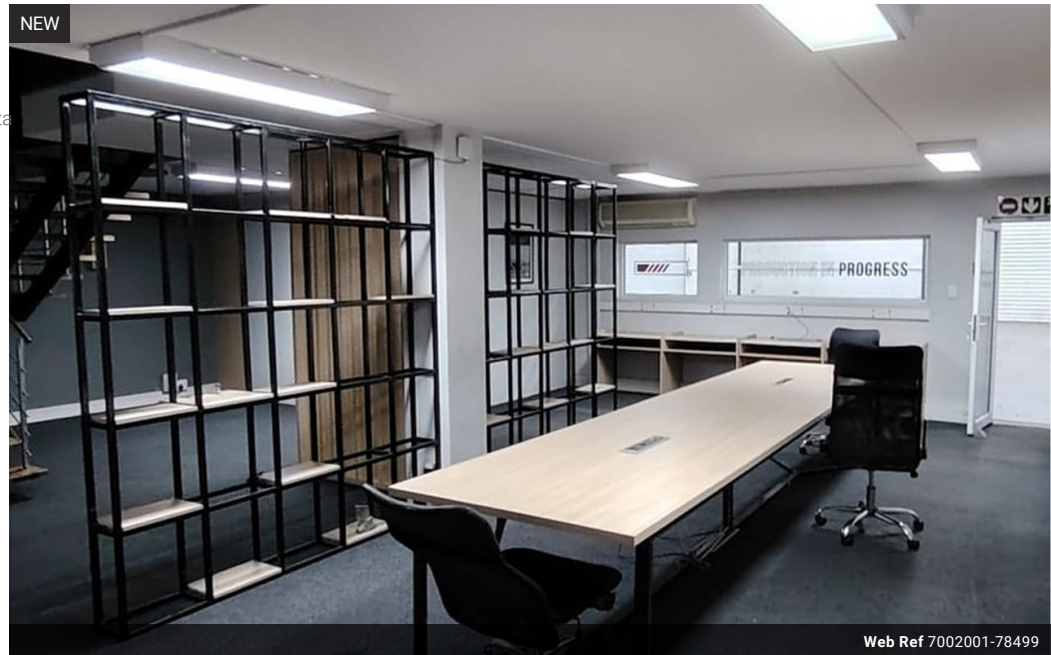
079-878-8306

meshaan.naidoo@expsouthafrica.co.za

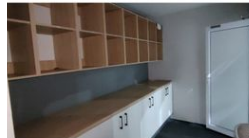
Contact eXp Realty

087 8212575

South Africa



Web Ref 7002001-78499



R78,950 pm

**Gross Monthly Rental** R78,950 Excl. VAT


Modern Office Space Available immediately in Newton Park Port Elizabeth!

Pickering Street Office Space - Newton Park  
Address: 87 Pickering Street, Pickering Square  
Availability: Immediate

Size: 540m²

Total Monthly Cost: R78,950.00 (Excl. VAT)

Features: Office Space: 540m² of modern offices with air conditioning throughout. Large reception area with a coffee room for guests. 2x boardrooms (downstairs and upstairs). 3x kitchens/canteen areas. 4 bathrooms (male and female). Meeting room off the reception area.

Additional Features: Fibre installed for seamless connectivity. CCTV system and VoIP telephone system. Fingerprint diagnostics system for secure entry/exit. Metered water with a backup water tank. 3-phase electricity for added power capacity.

Parking: 8 parking bays at R4,000.00 per month (Excl. VAT).

Security: 24-hour security with access-controlled entrance gate.

## Features

**Zoning** Commercial

### Exterior

Security Yes

### Sizes

Floor Size 540m²  
Land Size 540m²

### Extras

Modern Energy Backup Unit Near Shops Near Shopping Mall High Speed Internet Near Hospital Near Public Transportation Closed Circuit TV Near Bus Air Conditioning Unit New Building Near Motorway Wheelchair Accessible Security - System Near Golf Course Near Medical Center Near Children's Park Alarm System On Quiet Road Pets Not Allowed Near Park Near Schools Near University/Campus Frequency location Near Beach Water Booster Near Highway City Center Fibre Electrical generator High Traffic Good reachable traffic Safe Location Near Fitness centre On Busy Road