



Meshaan Naidoo
079-878-8306
meshaan.naidoo@expsouthafrica.co.za

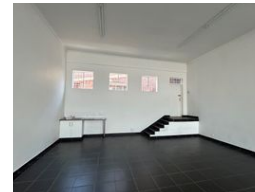
Contact eXp Realty

087 8212575

South Africa



Web Ref 7002001-77956



R15,750 pm

Gross Monthly Rental R15,750 Excl. VAT



Prime Retail/Office Space Available

Bracewell Centre - Shop 5, 308 Cape Road, Newton Park

Available Immediately

Size:100m²

Total Monthly Cost:R15,750.00 (Excl. VAT)

This prime retail/office space features:Huge open-plan layout with tiled flooringKitchenetteFiber-ready connectivityCommunal ablutionsPrepaid electricity

Highlights:Highly visible corner unit on Cape RoadPremises can be altered to suit tenant requirementsPlenty foot traffic

Features

Zoning Commercial

Exterior

Security Yes

Sizes

Floor Size 100m²
Land Size 100m²

Extras

On Busy Road High Speed Internet Good reachable traffic Near Motorway Frequency location Near Schools Near Park Near Bus Pets Not Allowed Washing Facilities(in building) Near Public Transportation On Quiet Road Wheelchair Accessible Near Highway Near Children's Park Security - System Safe Location High Traffic Near Shopping Mall Near Shops Near Fitness centre Near Hospital Near Medical Center Alarm System Downtown Fibre Near University/ Campus City Center