

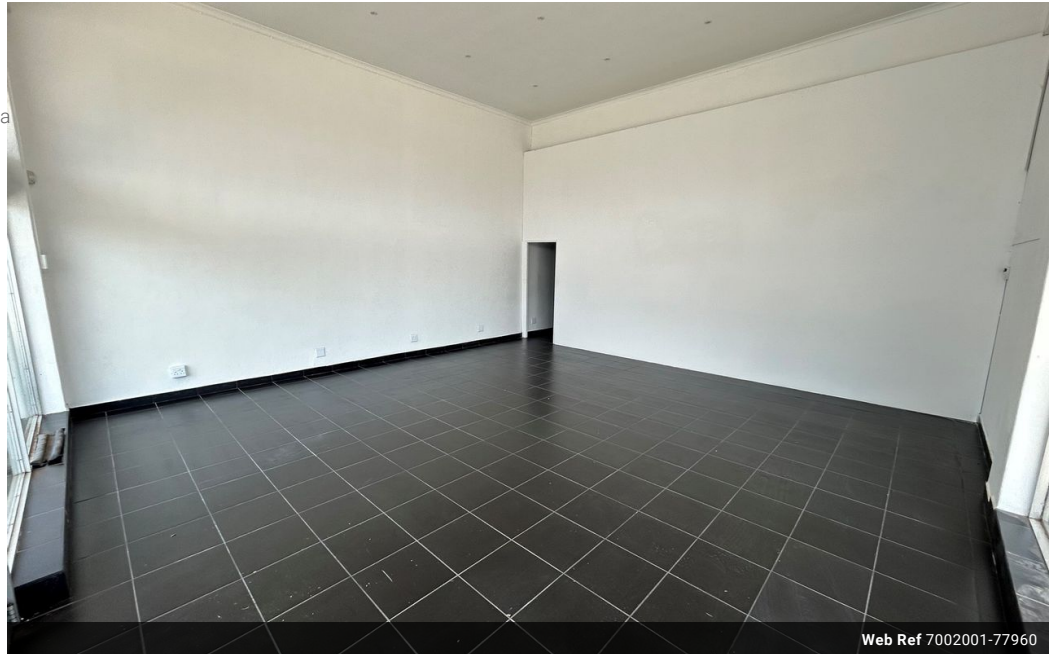


**Meshaan Naidoo**  
079-878-8306  
meshaan.naidoo@expsouthafrica.co.za

Contact eXp Realty

087 8212575

South Africa



Web Ref 7002001-77960



R17,250 pm

Gross Monthly Rental R17,250 Excl. VAT

0 0

Prime Corner Retail Space Available

Bracewell Centre - Shop 6A, 308 Cape Road, Newton Park  
Available Immediately  
Size:100m<sup>2</sup>

Total Monthly Cost:R17,250.00 (Excl. VAT)

This prime retail/office space features:Huge open-plan layout with tiled flooringKitchenetteFibre-ready connectivityCommunal ablutionsPrepaid electricity

Highlights:Highly visible corner unit on Cape RoadPremises can be altered to suit tenant requirements

Features

**Zoning** Commercial

**Exterior**  
Security Yes

**Sizes**  
Floor Size 100m<sup>2</sup>  
Land Size 100m<sup>2</sup>

**Extras**

On Busy Road High Speed Internet Good reachable traffic Near Motorway Frequency location  
Near Schools Near Park Near Bus Pets Not Allowed Near Public Transportation On Quiet Road  
Wheelchair Accessible Near Highway Near Children's Park Near Golf Course Safe Location  
High Traffic Near Shopping Mall Near Shops Near Fitness centre Near Hospital Near Medical  
Center Alarm System Downtown Fibre Near University/Campus City Center