

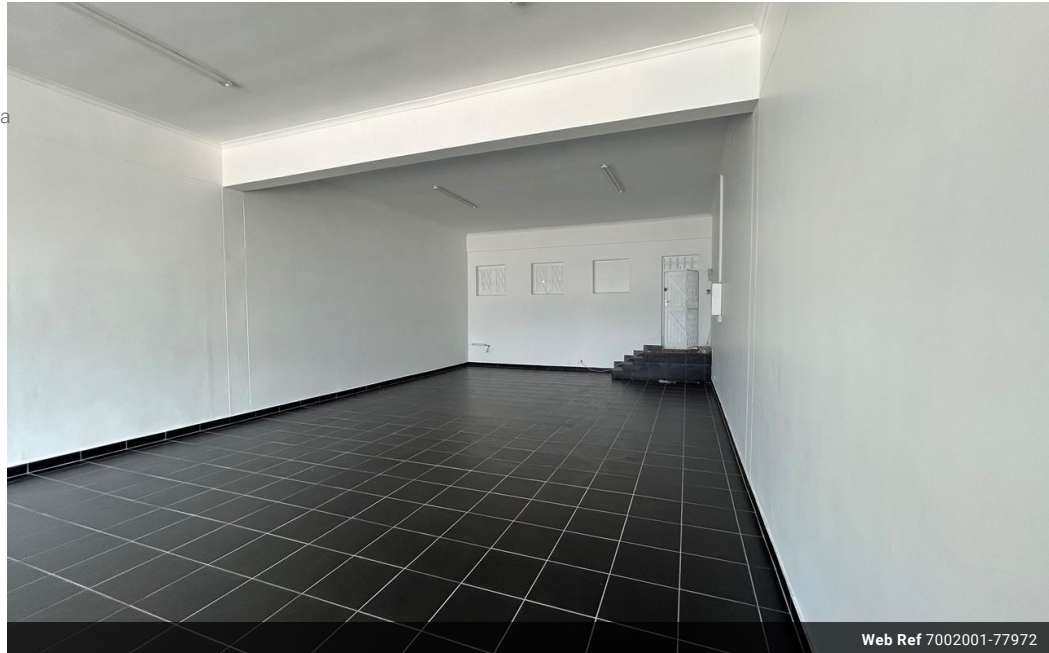


**Meshaan Naidoo**  
079-878-8306  
meshaan.naidoo@expsouthafrica.co.za

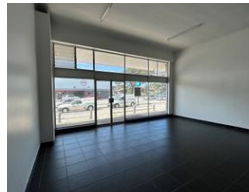
Contact eXp Realty

087 8212575

South Africa



Web Ref 7002001-77972



R15,000 pm

Gross Monthly Rental R15,000 Excl. VAT



### Prime Retail Space Available

Bracewell Centre - Shop 3, 308 Cape Road, Newton Park

Available Immediately

Size:100m<sup>2</sup>

Total Monthly Cost:R15,000.00 (Excl. VAT)

This prime retail/office space features:Huge open-plan layout with tiled flooringKitchenetteFibre-ready connectivityCommunal ablutionsPrepaid electricity

Highlights:Highly visible corner unit on Cape RoadPremises can be altered to suit tenant requirements

### Features

**Zoning** Commercial

#### Exterior

Security Yes

#### Sizes

Floor Size 100m<sup>2</sup>

Land Size 100m<sup>2</sup>

#### Extras

On Busy Road High Speed Internet Good reachable traffic Near Motorway Frequency location Near Schools Near Park Near Bus Pets Not Allowed Near Public Transportation On Quiet Road Near Highway Near Children's Park Near Golf Course Safe Location High Traffic Near Shopping Mall Near Shops Near Fitness centre Near Hospital Near Medical Center Alarm System Downtown Fibre Near University/Campus City Center