

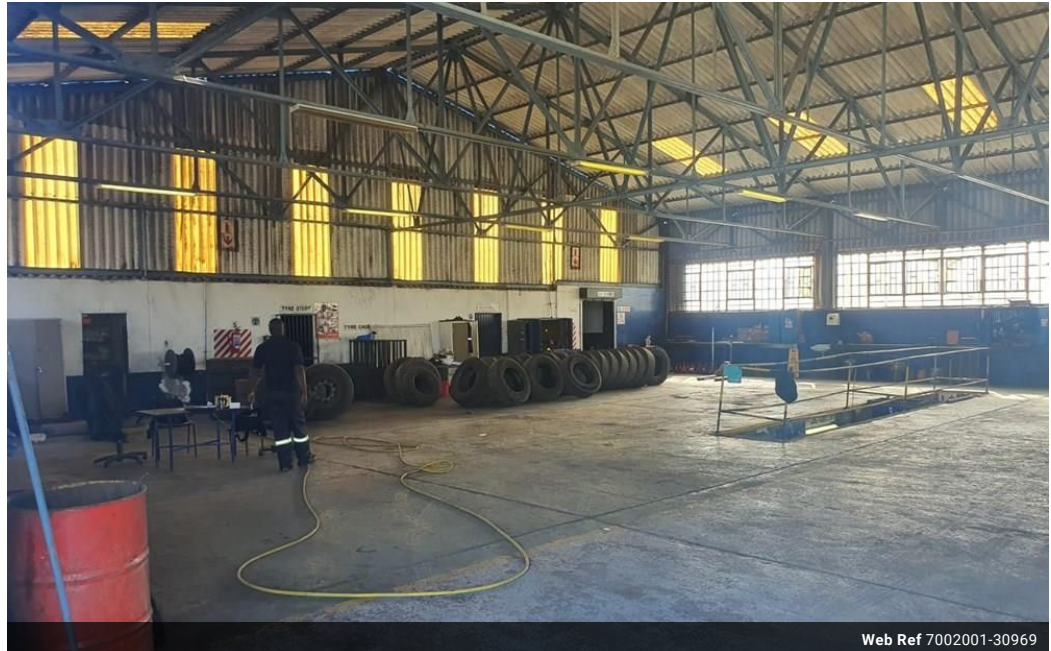


Ian Knott
 072-226-3189
 ian.knott@expsouthafrica.co.za

Contact eXp South Africa

087 8212575

Old Main Road
 Johannesburg
 South Africa



Web Ref 7002001-30969



R12,000,000

0 40

1800m² Warehouse situated on 33 000m² erf

The truck depot, situated close to Markman Industrial, covers an area of 33,000 square meters and offers a range of facilities to support its operations. To ensure security, the site has a separate entrance and parking area for staff and visitors, providing controlled access. This promotes a safe environment for both personnel and vehicles.

Within the depot, there are operational offices that serve as the central hub for managing truck-related activities. These offices likely handle administrative tasks, logistics coordination, and overall operational management. Additionally, there is a dedicated locker room and ablutions facility to cater to the needs of the drivers, allowing them to take breaks and freshen up during their shifts.

Features

Zoning Industrial

Exterior
 Open Parking Bays 40

Sizes
 Floor Size 33,000m²
 Land Size 33,000m²