

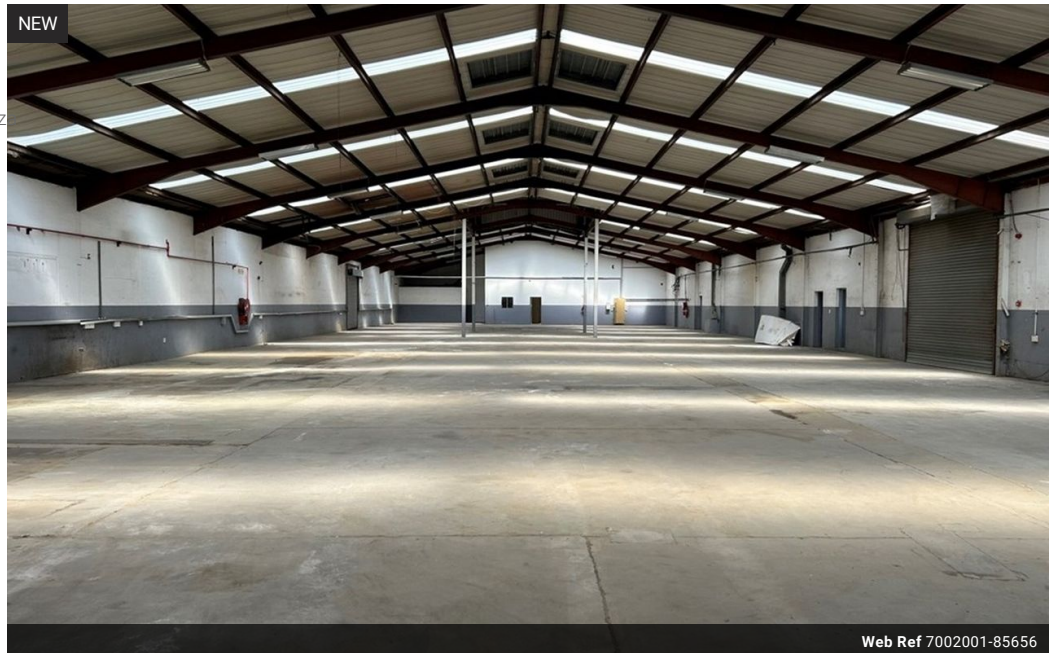


Duncan Macaskill
082-535-1375
duncan.macaskill@expsouthafrica.co.za

Contact eXp Realty

087 8212575

South Africa



Web Ref 7002001-85656



R91,756 pm

Gross Monthly Rental R91,756 Excl. VAT

 0  0

Factory to rent in Anderbolt – the ideal hub for manufacturing

Power, space, and access – the ideal hub for manufacturing in the heart of Anderbolt.

A neat 1,582m² warehouse / factory is now available to let on Main Reef Road in Anderbolt. Located within a secure, access-controlled industrial park, this well-maintained facility offers prime visibility and excellent logistical convenience, perfectly suited for manufacturing or distribution operations.

The warehouse boasts 300 amps of 3-phase power, making it ideal for heavy-duty equipment and manufacturing. With 5m eave height and 7m to the apex, the space is suitable for racking or high-volume production. A single large roller shutter door allows easy access for trucks, while interlink truck reticulation within the park ensures smooth logistics. The warehouse is well-lit with

Features

Zoning Industrial

Exterior

Security Yes

Sizes

Floor Size 1,582m²
Land Size 13,490m²

Extras

High Traffic Fire Escape Entrance Hall Unfurnished Needs Renovation Near Highway North East Covered Parking Steel Front Door Pets Not Allowed High Speed Internet On Busy Road Near Park Shower Near Public Transportation Frequency location Closed Circuit TV Wheelchair Accessible Near Hospital Fibre Near Shops Old Building Kitchen - Extra Washing Facilities(in building) Cloakroom Security - System Near Bus Safe Location Brick Near Railway station Near Motorway Kitchen-Dinette Open Eat-in Kitchen Good reachable traffic Insulated Near Airport Common Areas